

# Samsung

## Performance Restoration v.1.1

### Introduction and Installation Guide

# Legal Disclaimer

---

SAMSUNG ELECTRONICS RESERVES THE RIGHT TO CHANGE PRODUCTS, INFORMATION AND SPECIFICATIONS WITHOUT NOTICE.

Products and specifications discussed herein are for reference purposes only. All information discussed herein is provided on an “AS IS” basis, without warranties of any kind. This document and all information discussed herein remain the sole and exclusive property of Samsung Electronics. No license of any patent, copyright, mask work, trademark or any other intellectual property right is granted by one party to the other party under this document, by implication, estoppels or otherwise. Samsung products are not intended for use in life support, critical care, medical, safety equipment, or similar applications where product failure could result in loss of life or personal or physical harm, or any military or defense application, or any governmental procurement to which special terms or provisions may apply. For updates or additional information about Samsung products, contact your nearest Samsung office.

## Copyright © 2014

---

This material is copyrighted by Samsung Electronics. Any unauthorized reproductions, use or disclosure of this material, or any part thereof, is strictly prohibited and is a violation under copyright law.

## Trademarks & Service Marks

---

The Samsung Logo is the trademark of Samsung Electronics. Adobe is a trademark and Adobe Acrobat is a registered trademark of Adobe Systems Incorporated. All other company and product names may be trademarks of the respective companies with which they are associated.

# Introduction

---

The Performance Restoration software is designed to restore Samsung SSD 840 EVO SSD easily. Performance Restoration will restore Samsung SSD 840 SSD Performance.

Samsung Performance Restoration software is developed and distributed exclusively for owners of Samsung Solid State Drives (SSDs).

## Performance Restoration Version 1.1

---

Performance Restoration version 1.1 features

- Support Model : Samsung SSD 840 EVO, 840 EVO mSATA
- Firmware Update
- SSD Performance Restoration

✗ Samsung Performance Restoration v.1.1 does not work, if users did performance restoration through v.1.0

## Improvements

---

1. GUI (Progress bar) improved
2. Improved compatibility of detecting drives with some PC systems

# System Requirements

---

Component	Requirement
Operating System	Windows XP SP2 (32bit) Windows Vista (32/64bit) Windows 7 (32/64bit) Windows 8 & 8.1(32/64bit)
Disk Capacity	minimum 20MB available for installation
Supported Partition Types	MBR, GPT
Supported Languages	English
SSD	The following Samsung SSDs are supported*: Samsung SSD 840 EVO (2.5") Samsung SSD 840 EVO mSATA

\*Some features may not be supported for all models.

# Driver Support

---

Chipset	Driver	Supported
Intel	Microsoft	Yes
	Intel	Yes
AMD	Microsoft	Yes
	AMD	Yes(Latest Driver only)
	NVIDIA	Yes

## Precautions

---

- 1) The SSD should not be removed or disconnected while SSD Restoration is in progress. Doing so could result in data corruption.
- 2) Data corruption may result if the user terminates the Performance Restoration application abnormally while SSD Performance Restoration.
- 3) There is always the risk of data loss when updating SSD firmware. It is imperative that the user backs up any important data before performing a firmware update with Performance Restoration application or Dos Solution.
- 4) The SSD may be permanently damaged if it is unplugged while the firmware update process is in progress via the Performance Restoration application or DOS Utility.
- 5) If users restored performance with "Samsung Performance Restoration v.1.0", users do not need to use "Samsung Performnace Restoration v.1.1". (Tool does not work)

## General Limitations

---

- 1) Performance Restoration is designed specifically for Samsung SSD 840 EVO Series. Performance Restoration function is not supported for non-Samsung SSD 840 EVO Series SSD.
- 2) Samsung Performance Restoration does not work with SSDs connected via the SCSI controller interface and USB to SATA interface.
- 3) Only MBR and GPT partition types are supported. Performance Restoration may

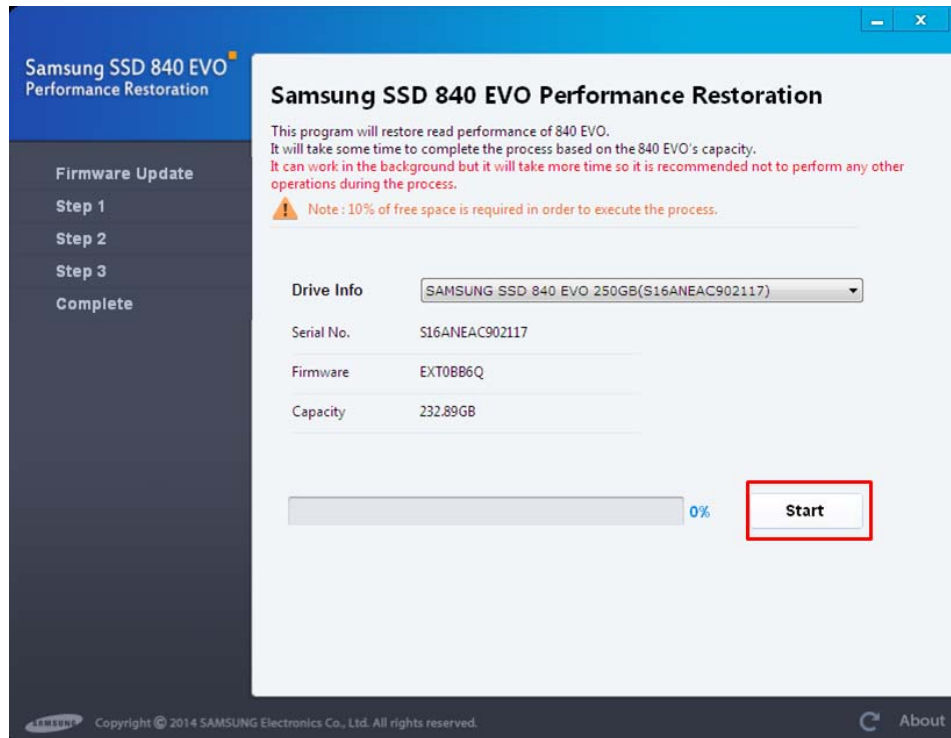
not work with other partition types.

- 4) Performance Restoration will not work on SSDs that are locked with a user password.
- 5) The user may need to manually refresh the disk list in System Information for Performance Restoration to accurately reflect all connected/removed disks.
- 6) It may be necessary to manually refresh the disk list in System Information before performing Performance Restoration on a newly attached disk.
- 7) Performance Restoration supports only the NTFS file system.
- 8) If RAIDmode turns on in SATA configuration, It is not supported by Samsung Performance Restoration and DOS application.
- 9) Performance Restoration does not support dynamic disk.
- 10) PC will be shut down automatically after firmware update  
(Performance Restoration counts down 20 seconds before shutdown)
- 11) Security mode (Class 0, TCG/Opal or Encrypted Drive) must be disabled (unlocked) before removing and installing onto another PC.
- 12) Firmware Update may fail on Samsung brand SSDs connected to AMD Controller.  
Please retry using default sata AHCI controller(Microsoft drivers)
- 13) If user is using any custom storage driver, then Performance Restoration may not function properly. Please always use the latest storage driver or Microsoft driver.
- 14) Performance Restoration supports default magnification (100%) of Display.
- 15) Performance Restoration can't communicate with SSD possibly due to security, Vaccine or DRM application.
- 16) Performance Restoration can't support virtual disk created by Hypervisor.
- 17) If user tries to do firmware update on the different system as a secondary drive using Performance Restoration, Installed OS such as Windows 7, Vista, 2008 R2 won't boot due to Windows policy. Performance Restoration doesn't support this case.

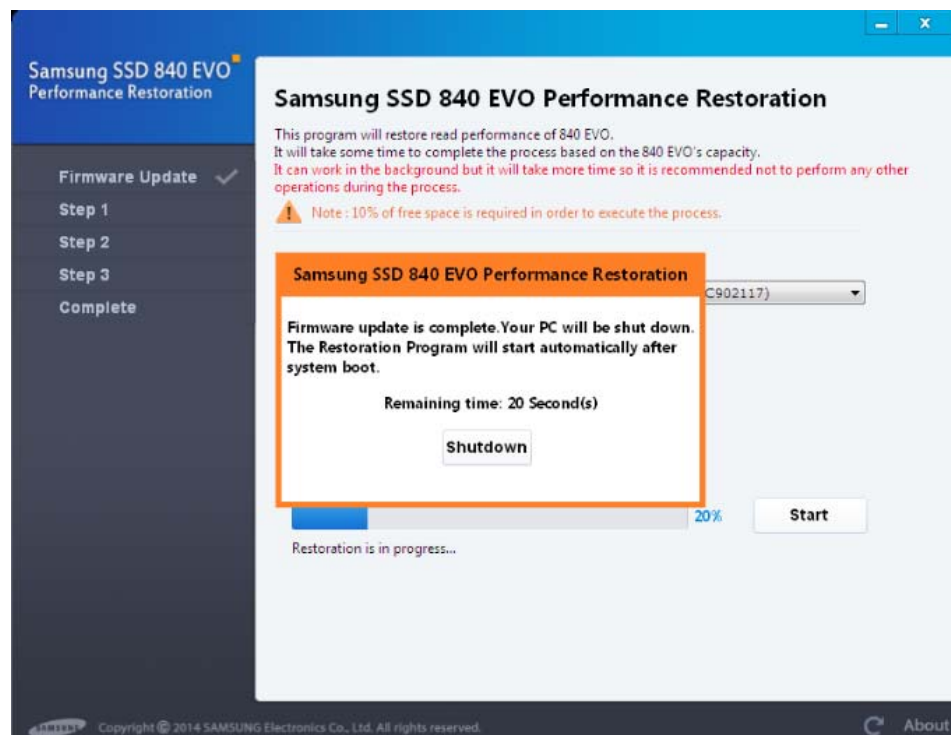
# User Installation Guide

1. (Normal Mode) If the Disk has more than 10% of free space.

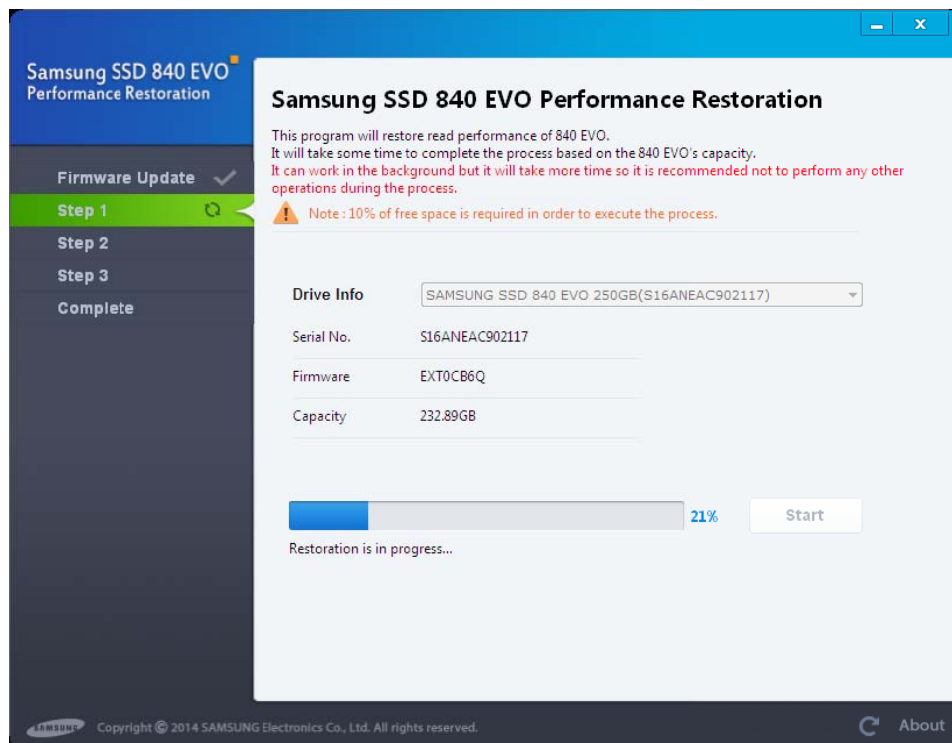
STEP 1. Start Performance Restoration



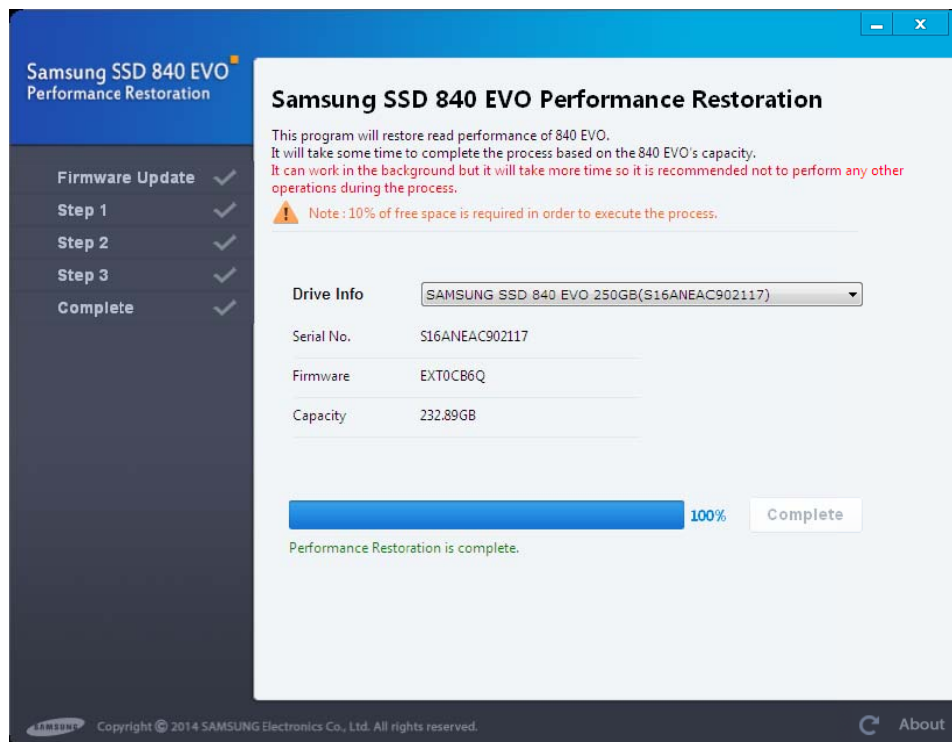
STEP 2. Update Firmware



### STEP 3. Restoration is in Progress

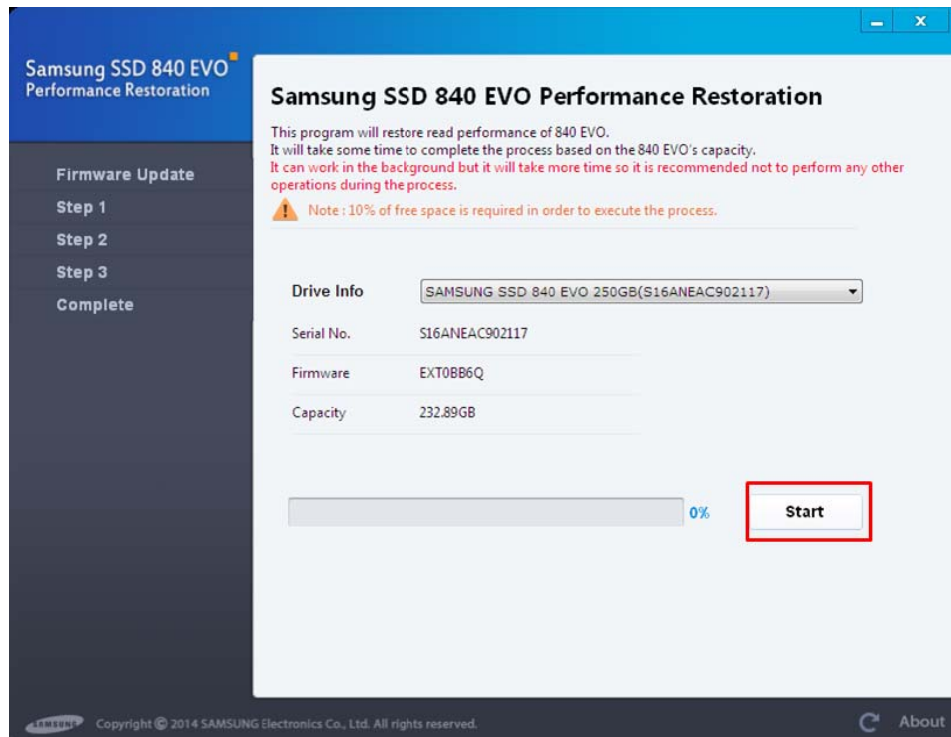


### STEP 4. Restoration is completed

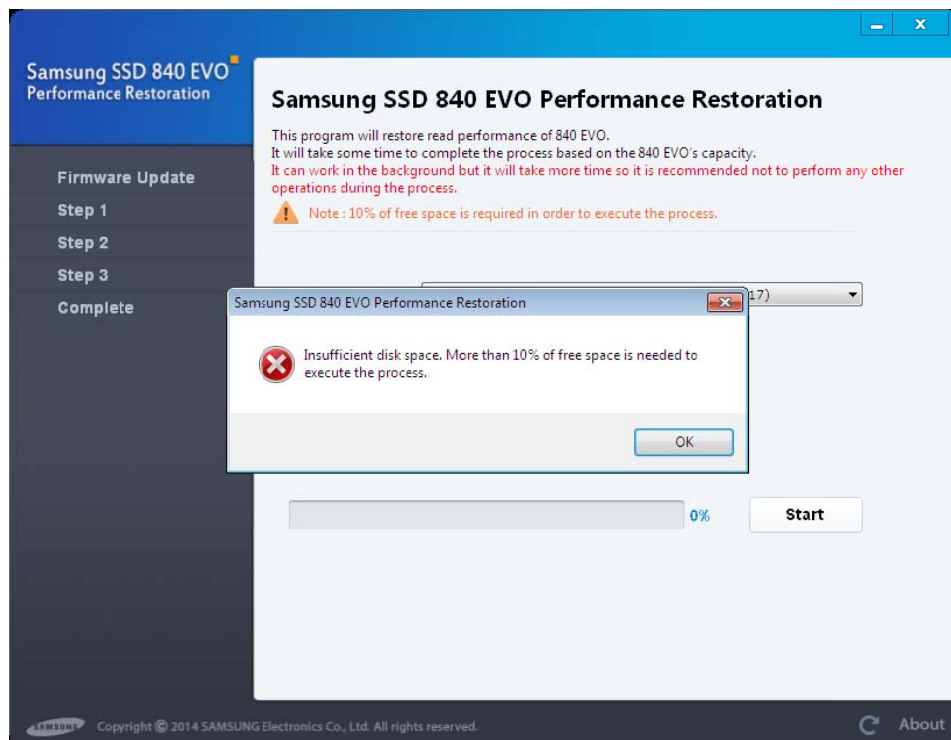


2. (Advanced Mode) If the Disk doesn't have more than 10% of free space.

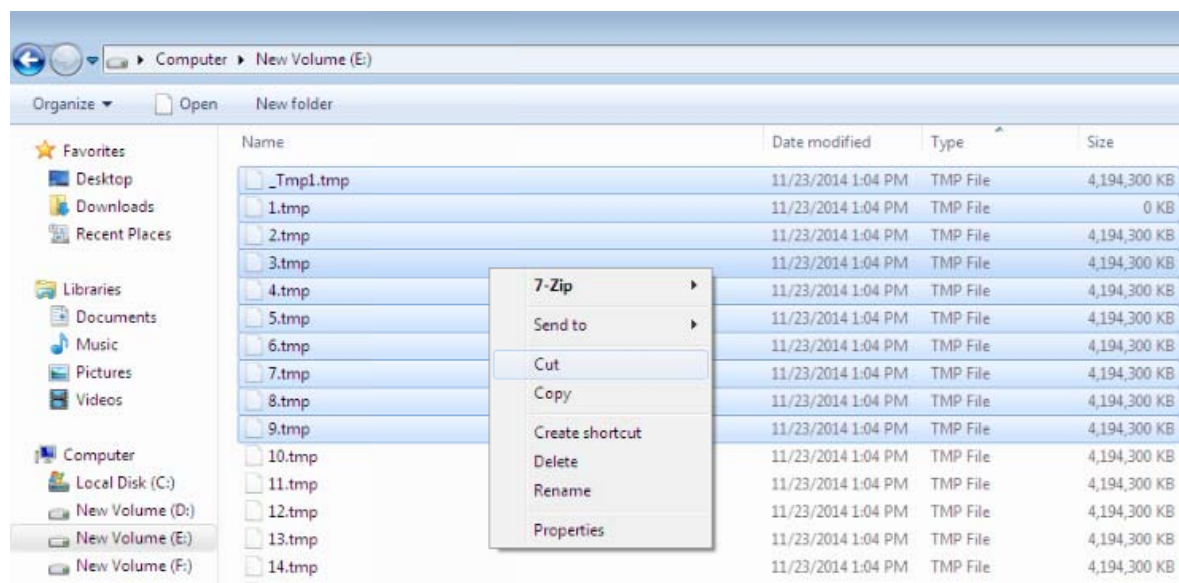
#### STEP 1. Start Performance Restoration



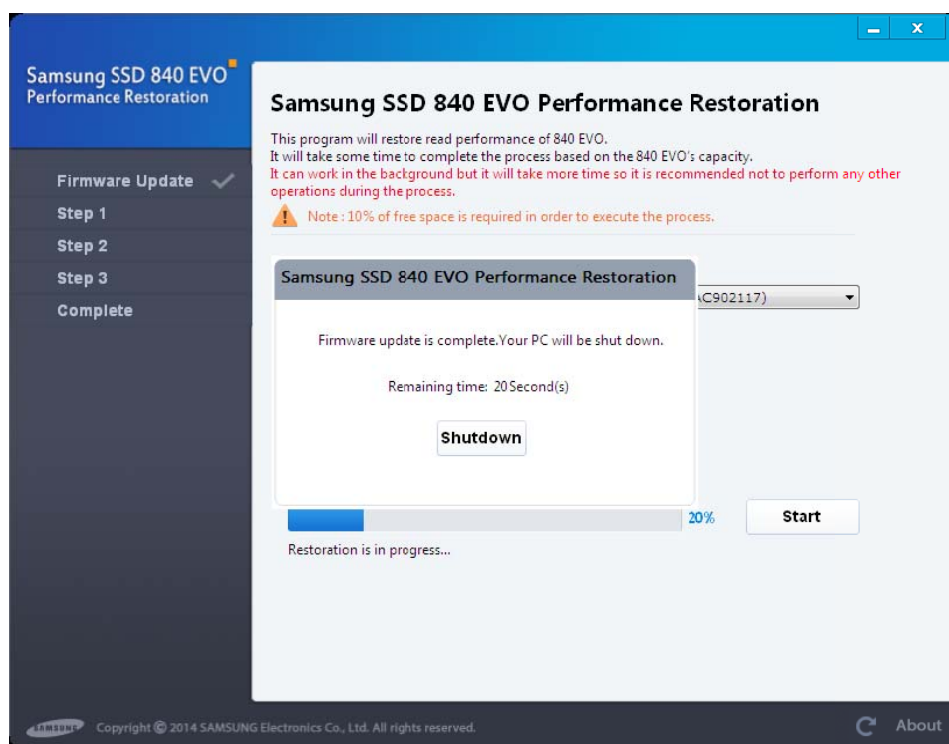
STEP 2. If the SSD doesn't have more than 10% of free space, go to STEP 3.



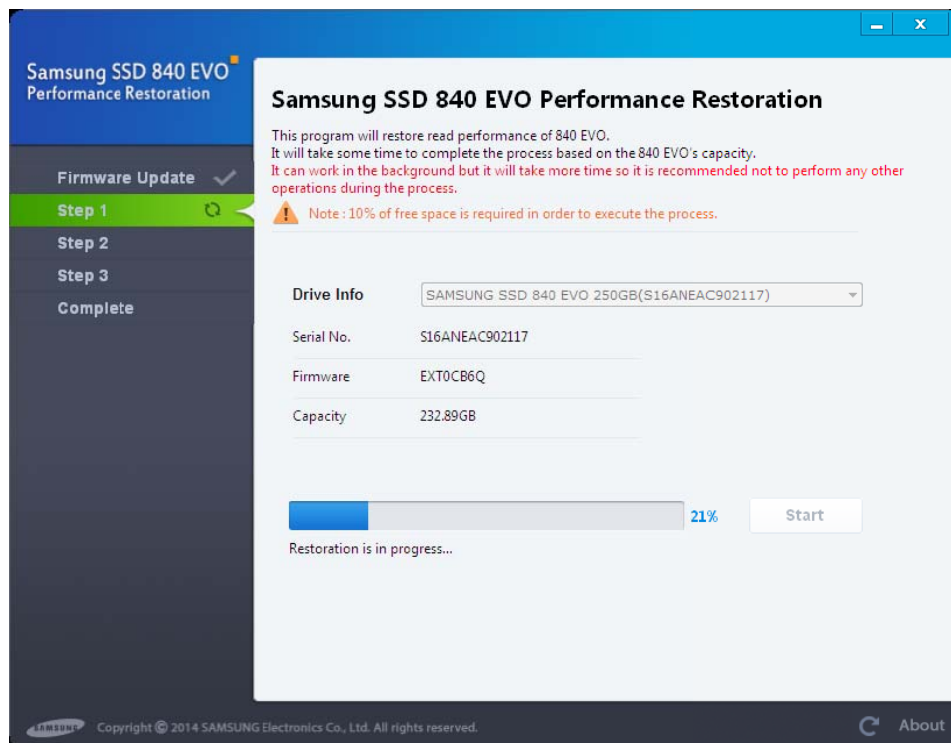
STEP 3. Remove unused files and programs for having more than 10% of free space in disk.



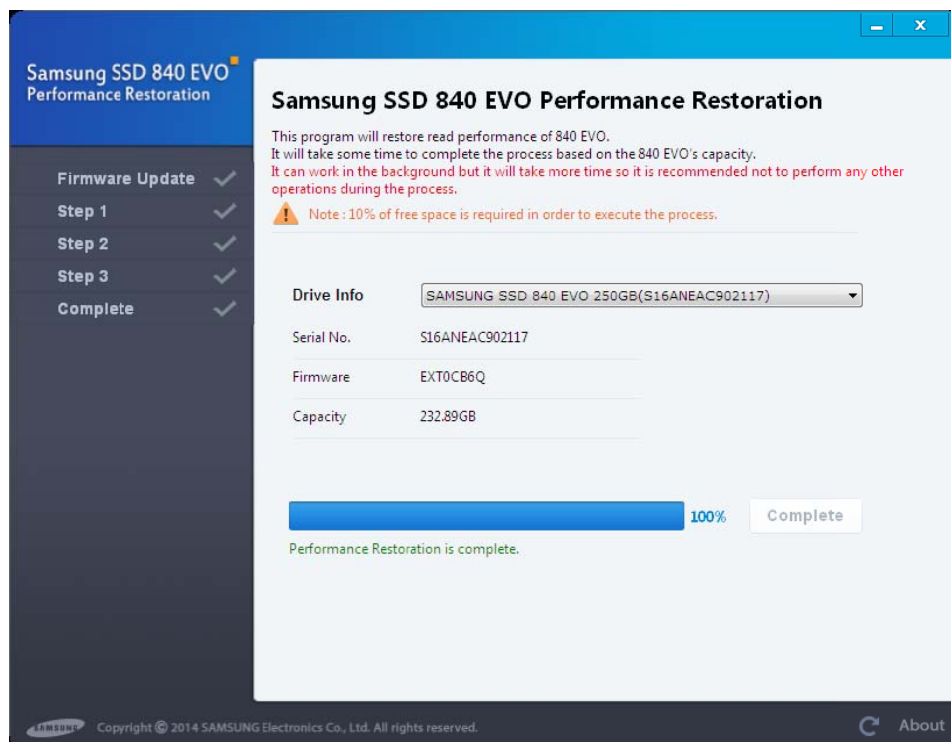
STEP 4. After ensuring more than 10% of free space. Click the Start button.



## STEP 5. Restoration is in Progress

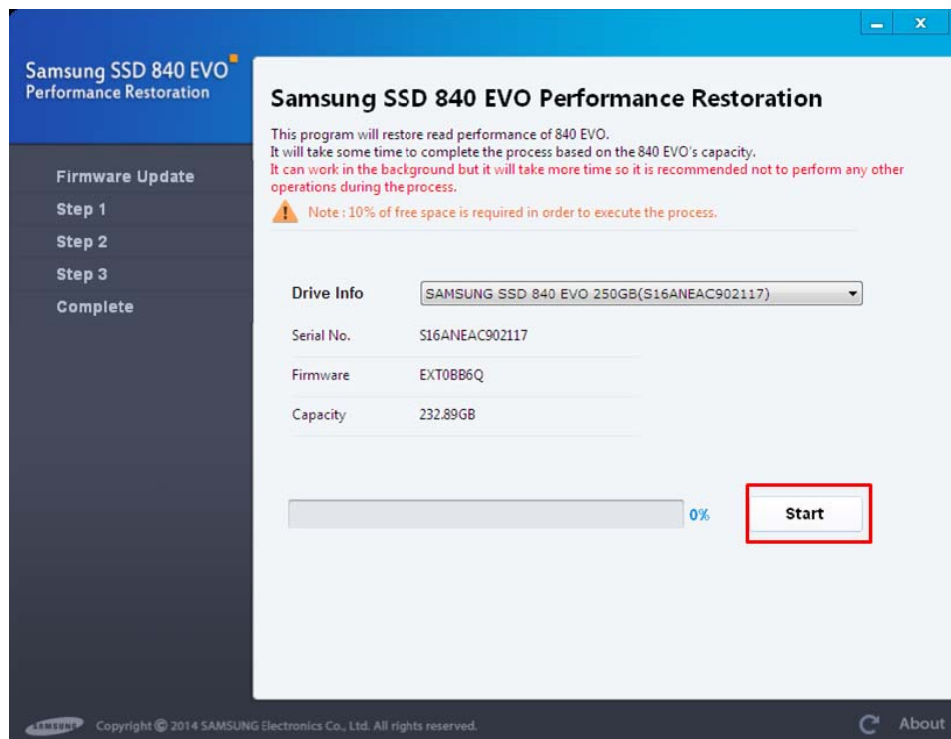


## STEP 6. Restoration complete

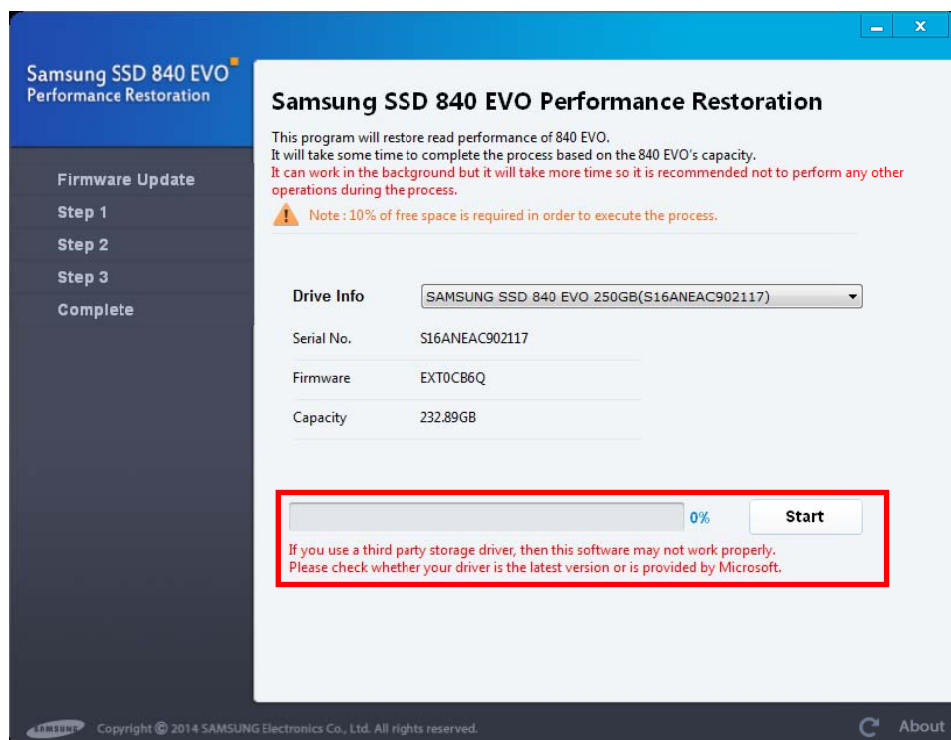


3. (Advanced Mode) If there is a compatibility issue with chipset driver

#### STEP 1. Start Performance Restoration

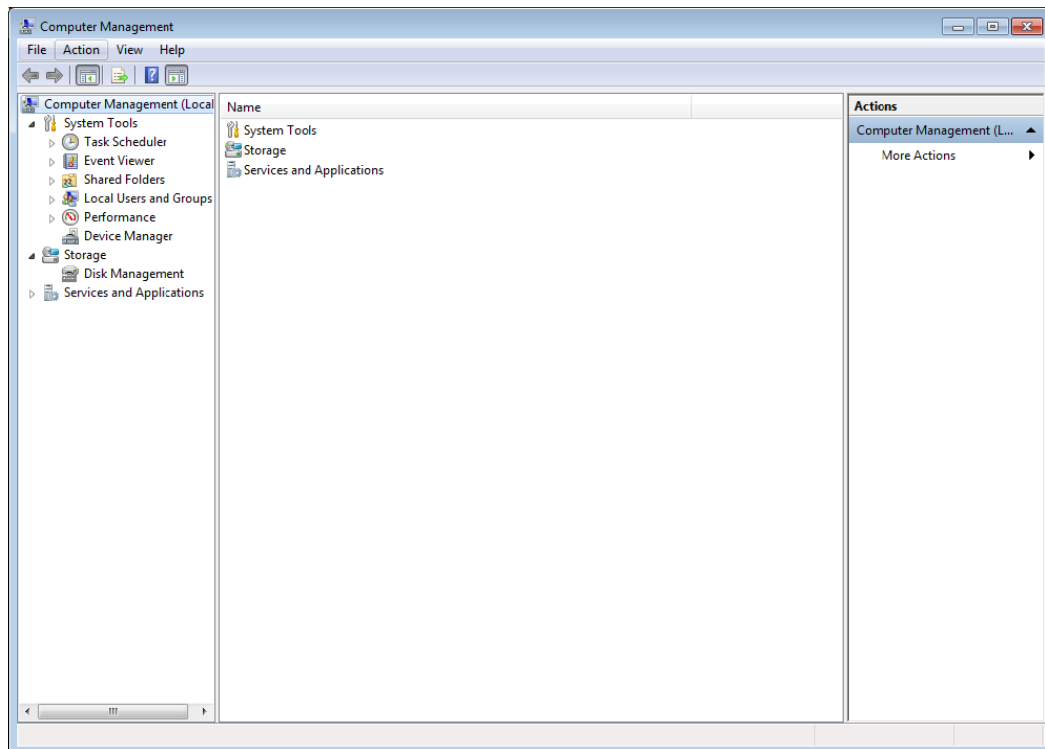


STEP 2 Error message : if system use third party driver or old driver

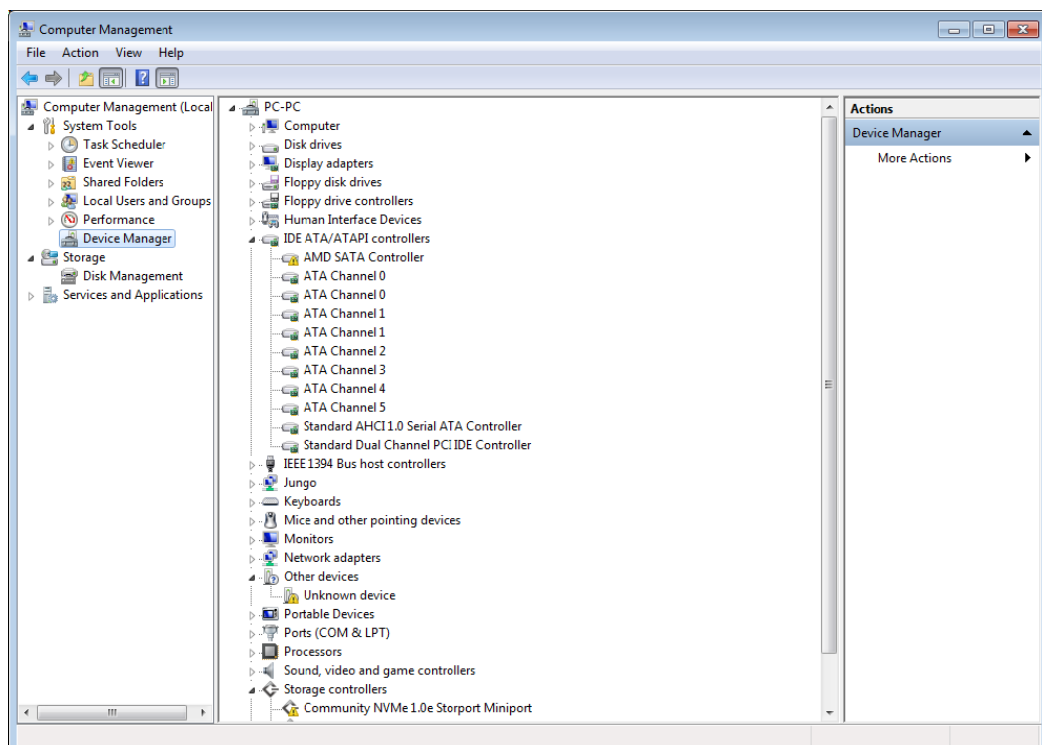


### STEP 3 Update to the latest driver or Microsoft driver

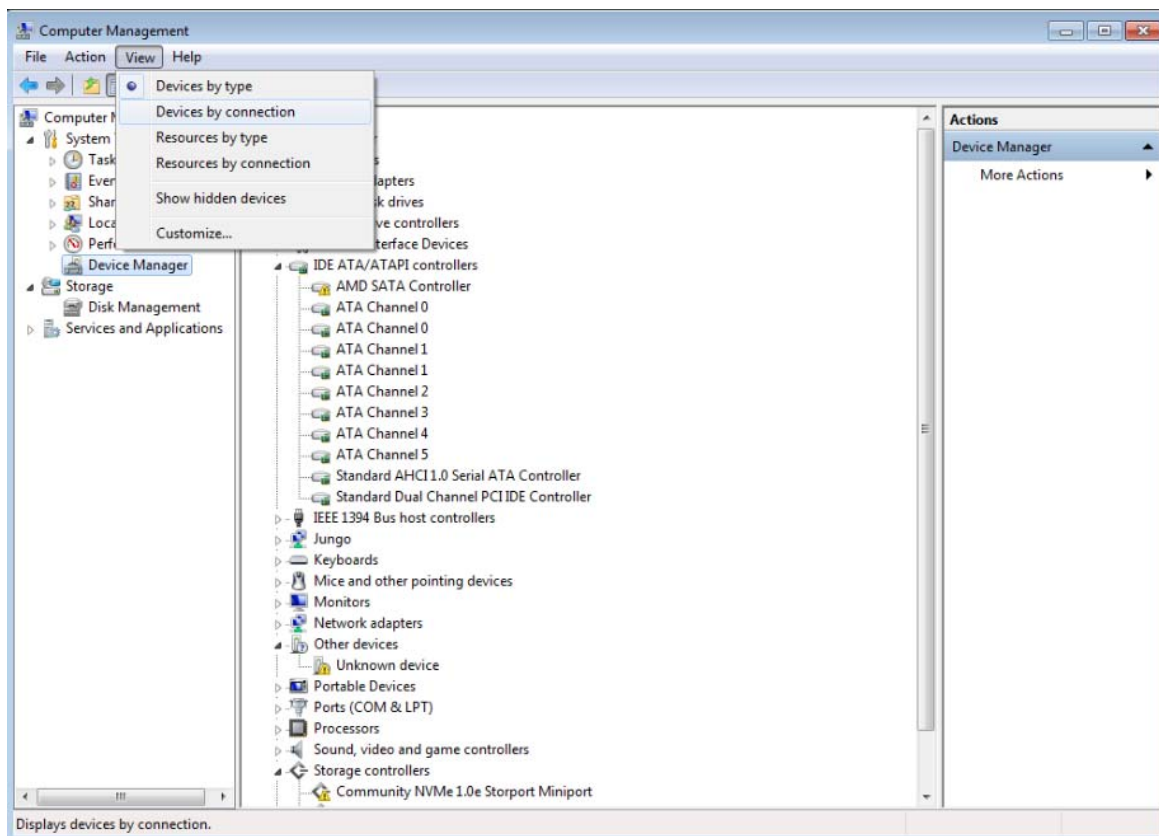
- 1) Update to Microsoft driver
  - i) Right-click on 'My computer'
  - ii) Click 'Management' (Below screen will be shown)



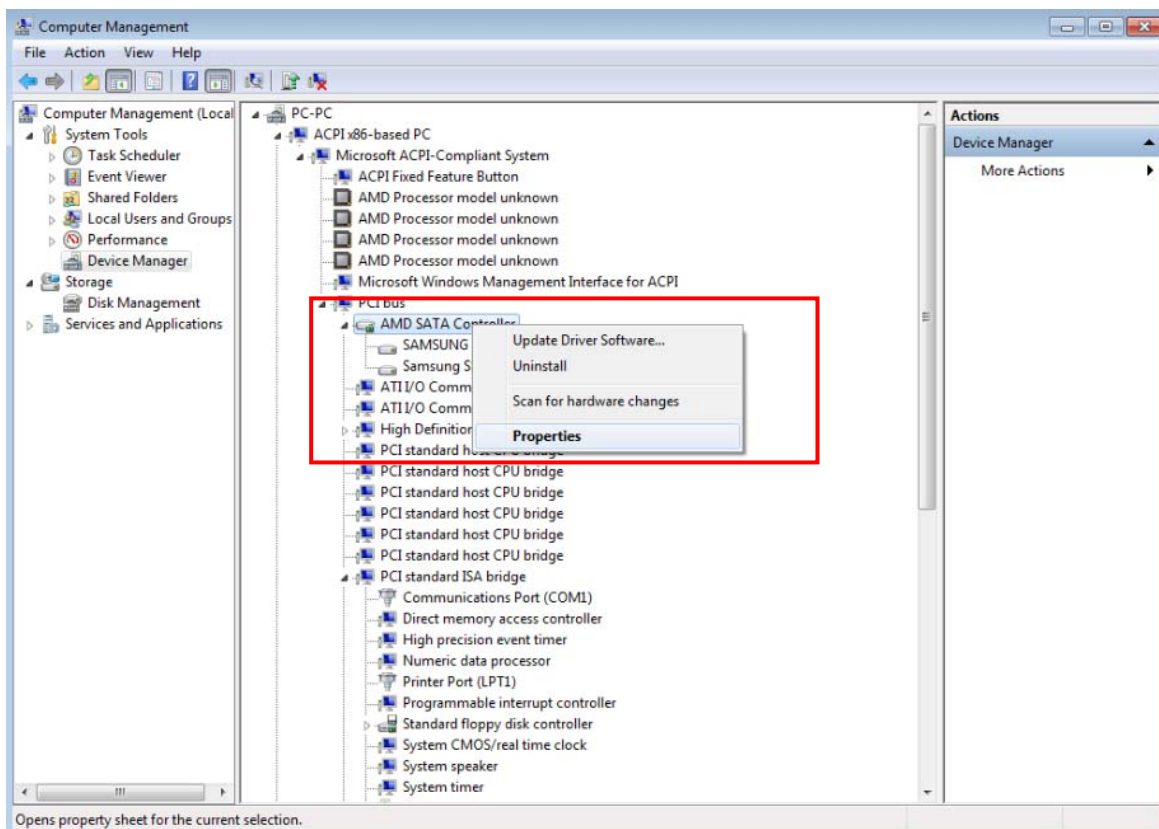
- iii) Click 'Device Manager'



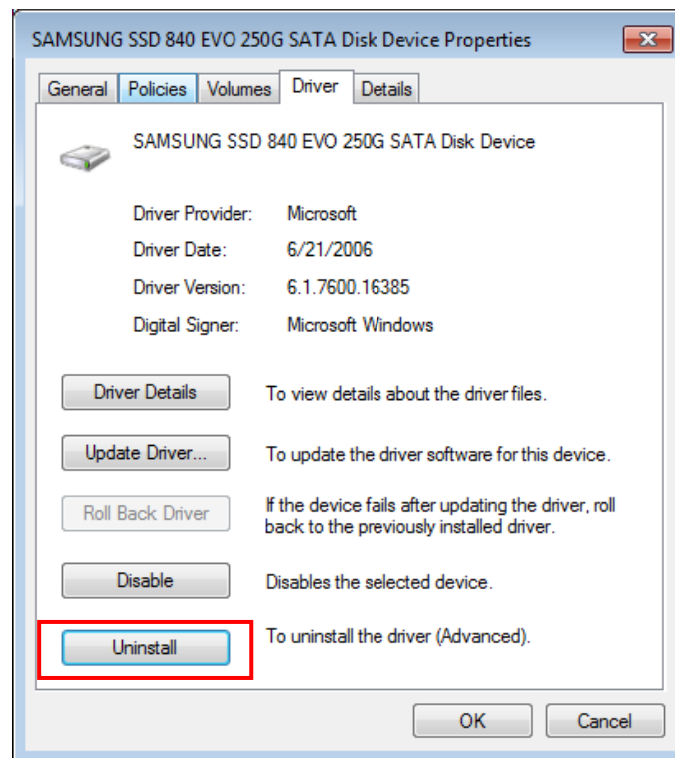
- iv) Click 'Devices by connection' in 'View' menu



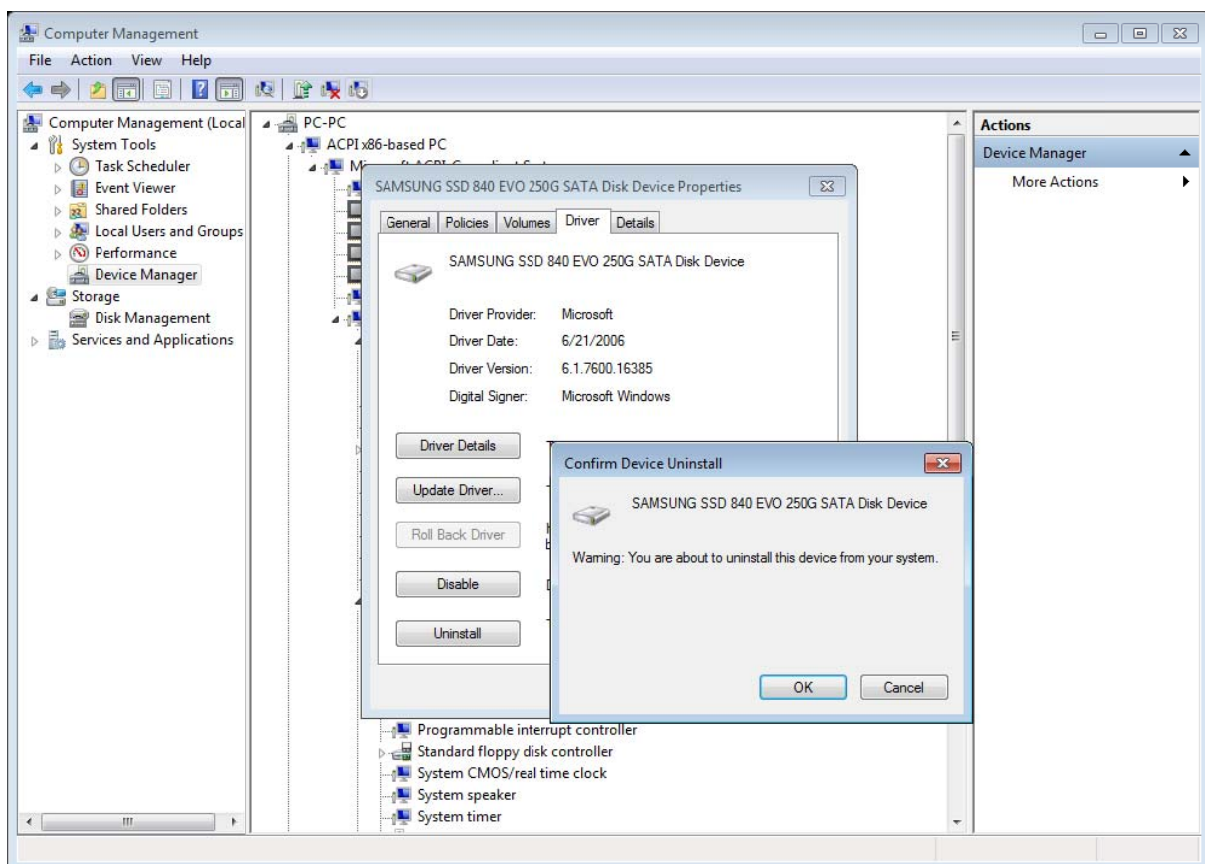
- v) Click 'Properties' after right-click on driver for connected SSD



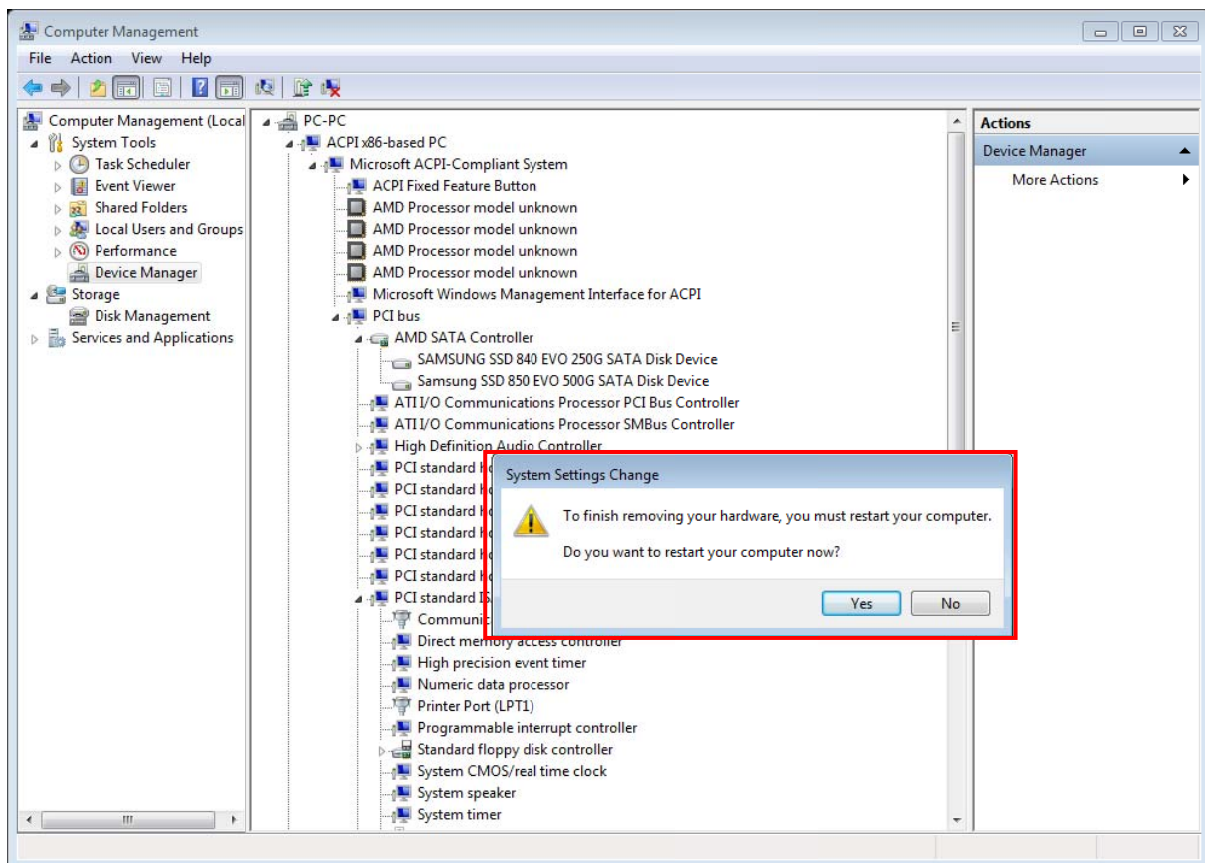
- vi) Click 'Uninstall' on Drive section in the screen of 'Properties'



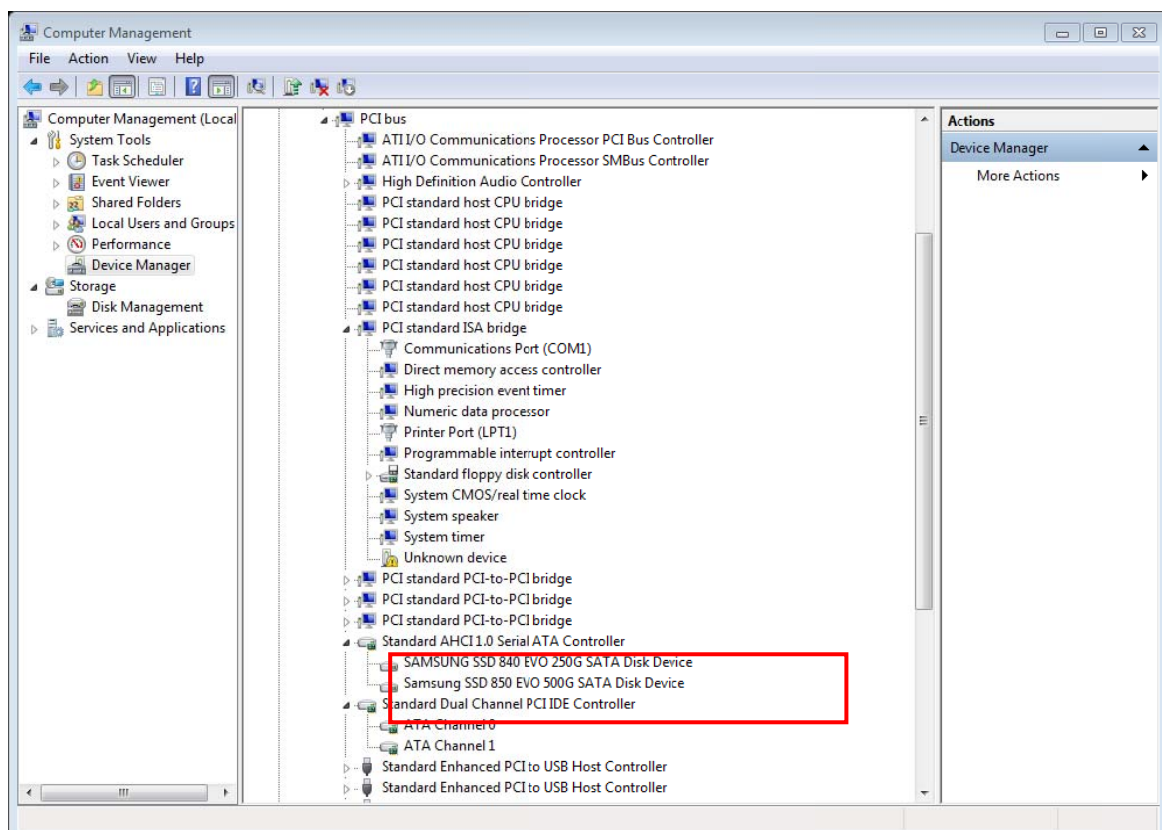
- vii) Click 'OK'



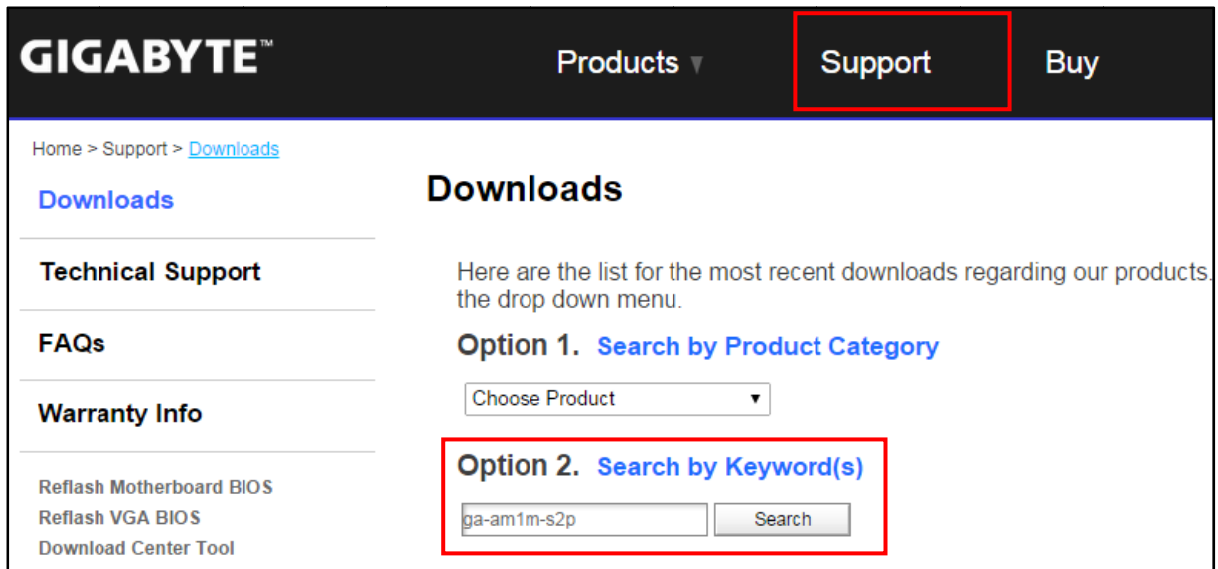
viii) Rebooting after driver uninstall



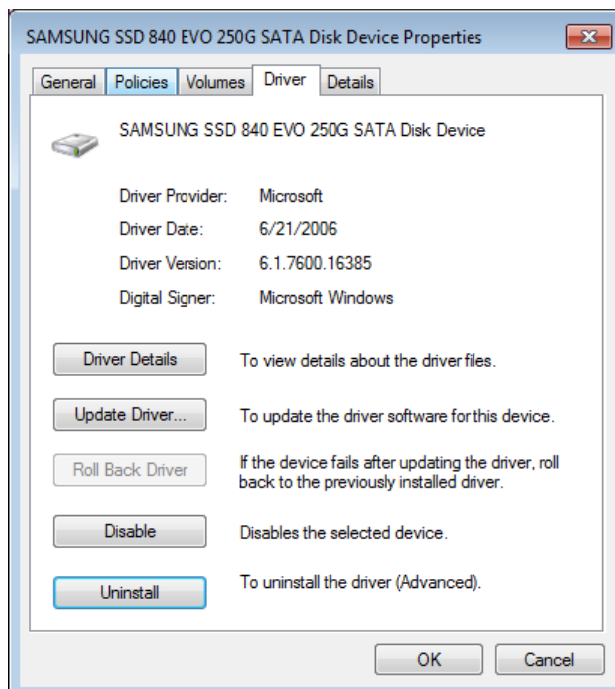
ix) Check : SSD is connected to 'Standard AHCI'



- 2) Update to the latest AMD Driver
  - A. Visit support page on motherboard manufacture
  - B. Check the system and motherboard model

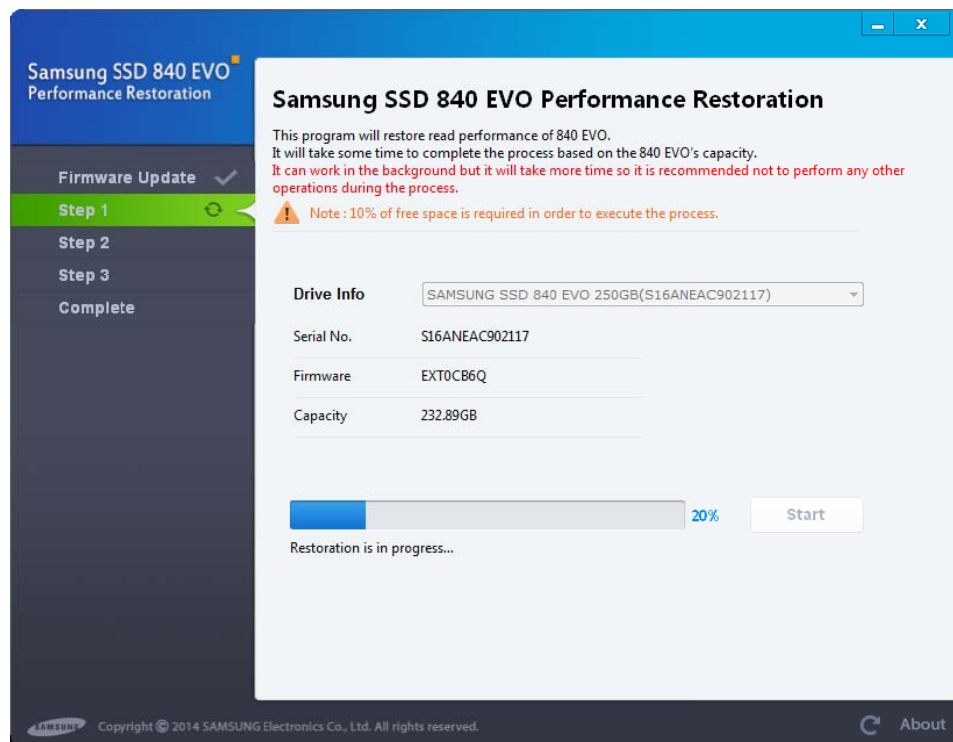


- C. Download and install the latest SATA AHCI driver
- 3) Update to the latest Microsoft Driver
  - A. Click 'Update Driver' on 'Driver' section in the screen of 'Properties'

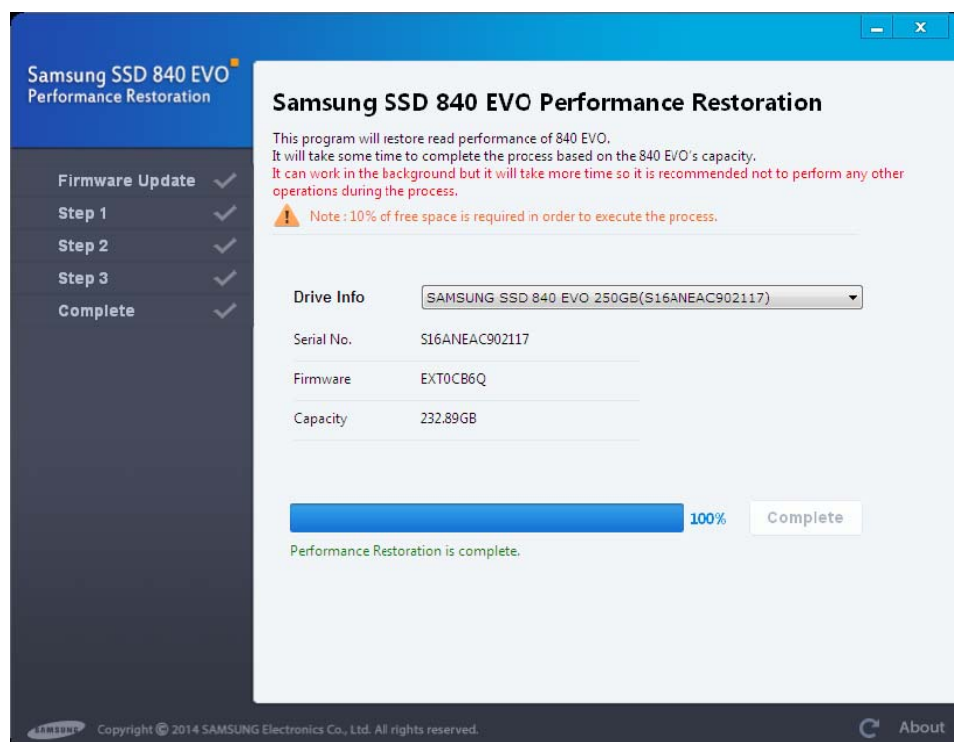


- B. Update automatically if there is new latest driver

STEP 4. Execute Performance Restoration Software again.



STEP 5 Restoration Complete.





2014.10 (Rev 1.1)

[www.samsung.com/ssd](http://www.samsung.com/ssd), [www.samsung.com/samsungssd](http://www.samsung.com/samsungssd)

All brand and product names are trademarks of their respective companies.  
Design and contents of this manual are subject to change without notice.

©2014 Samsung Electronics, Co., Ltd. All rights reserved.