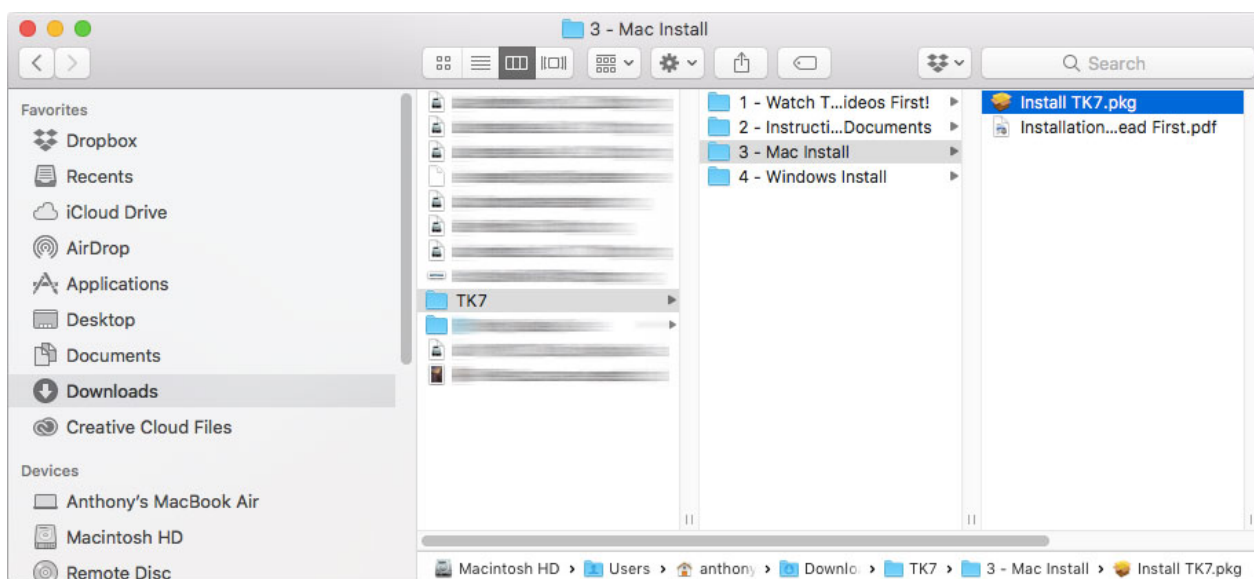


Installing the TK7 Panel for Photoshop CC

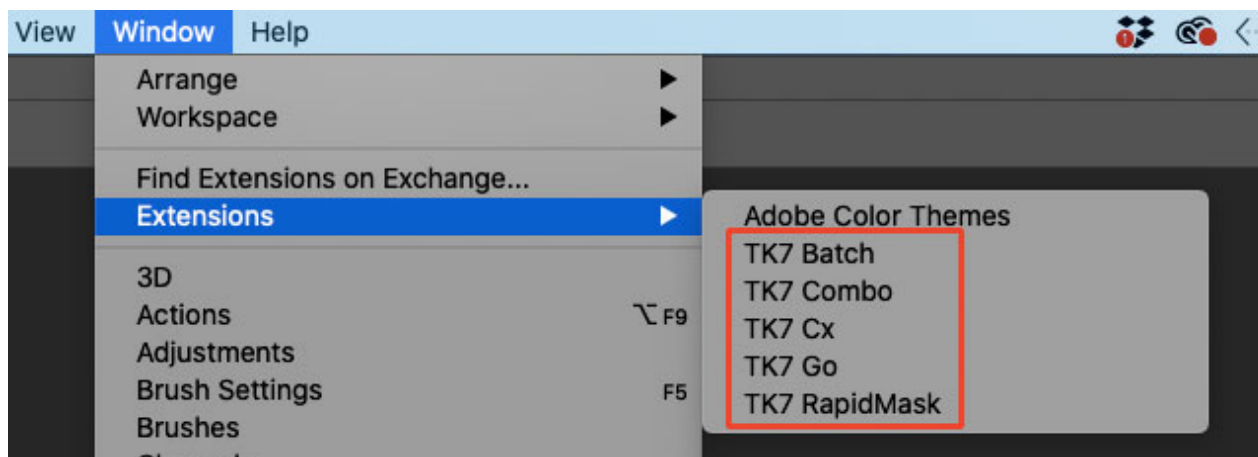
INSTALLATION: There is an installer in the download folder that will install the panel on your computer. Follow the steps below.

1. **Quit Photoshop.**
2. **Click the "tk7-english-updated" folder in Downloads to open it in Finder.**
3. **In the "tk7-english-updated" folder find the "Install TK7.pkg" file and double-click it.** Here's the path to the file:

"tk7-english-updated" download folder > "3 - Mac Install" folder > "Install TK7.pkg" file

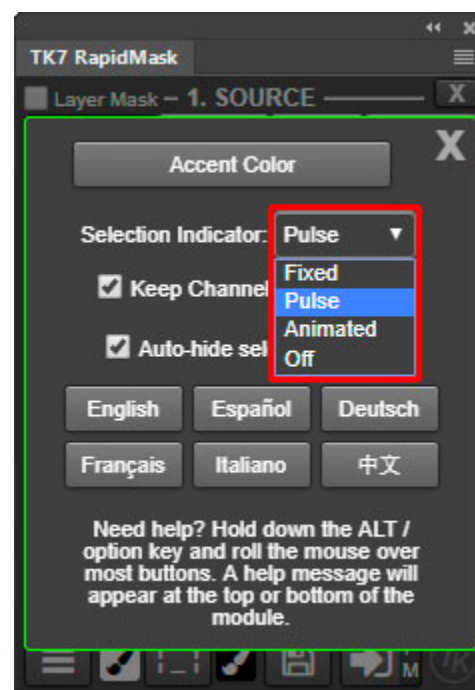
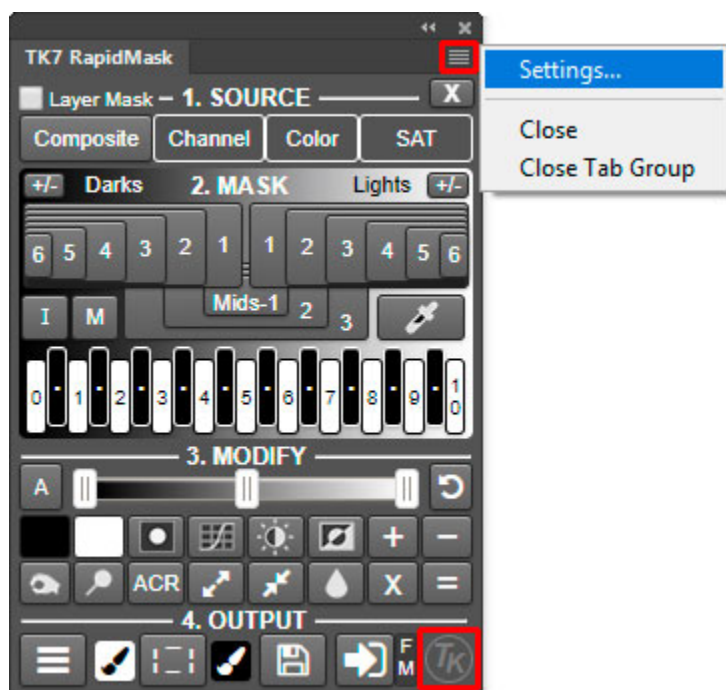


4. **The installer then begins the installation process. Read the messages and follow the prompts to complete the installation process.**
5. **Once installation has finished, open Photoshop CC and click the menu command Window > Extensions. From the pop-out menu, click on a module name to open that module.** To open multiple modules, it is necessary to click through Window > Extensions and open each one separately. The names of TK7 modules as they appear on the "Extensions" menu are shown in the image below.



6. Choose settings.

- Open the settings by clicking the "TK" icon on each module or by choosing "Settings..." from the fly-out menu in the upper right corner of each module.
- Choose language, accent color, and selection indicator appearance using the controls.
- Close the settings window by clicking the "X" in the upper right corner or by clicking anywhere outside the settings window.



7. Transfer actions. The first time the Combo, Cx, or Batch modules are opened, they install two new action sets on the regular Actions panel in Photoshop: TK_USER_ACTIONS and TK_BUTTON_ACTIONS. If you have actions from a previous TK panel that you are playing from the User► menu, drag these actions into the TK_USER_ACTIONS action set. Then when you open the User► menu, they will automatically appear in the menu and can again be played directly from the module.

8. Save the download folder in safe place. You may need to reinstall the modules after Photoshop, operating system, or other upgrades.

[Contact Tony Kuyper](#) if there are any problems, but please review the directions above to make sure the modules have been properly installed. Also review the troubleshooting section that starts on the next page. The panel works 100% of the time when properly installed in a properly functioning version of Photoshop.

UNINSTALLING TK7 MODULES: If you decide to remove the TK7 modules, follow the steps below.

1. Close Photoshop CC.
2. Go to the "extensions" folder at the end of the following path (see NOTE below):

Macintosh HD > Library > Application Support > Adobe > CEP > extensions

3. Delete the following folders:

com.tk.batchvseven
com.tk.combovseven
com.tk.cvxseven
com.tk.govseven
com.tk.rmvseven

NOTE: If you have trouble finding "Macintosh HD" in finder, see the last page of these instructions

Troubleshooting

As with any software, there are occasionally problems. The situations below have occurred for a few people. If you are having problems, please review these tips to get the TK7 module working properly.

1. Error message: "The <module name> extension could not be loaded because it was not properly signed."

This error means that the contents of the module's installation folder have been altered. The panel has indeed been properly signed, but the signature chain, which guarantees unaltered code, is broken. This can happen if the user accidentally or on purpose opens the installation folder, but it also appears to happen spontaneously sometimes during routine installation or periodic Photoshop updates by Adobe. The solution is to use the download link to get a NEW download folder and then run the installer again. It will replace all the modules with new, properly signed versions.

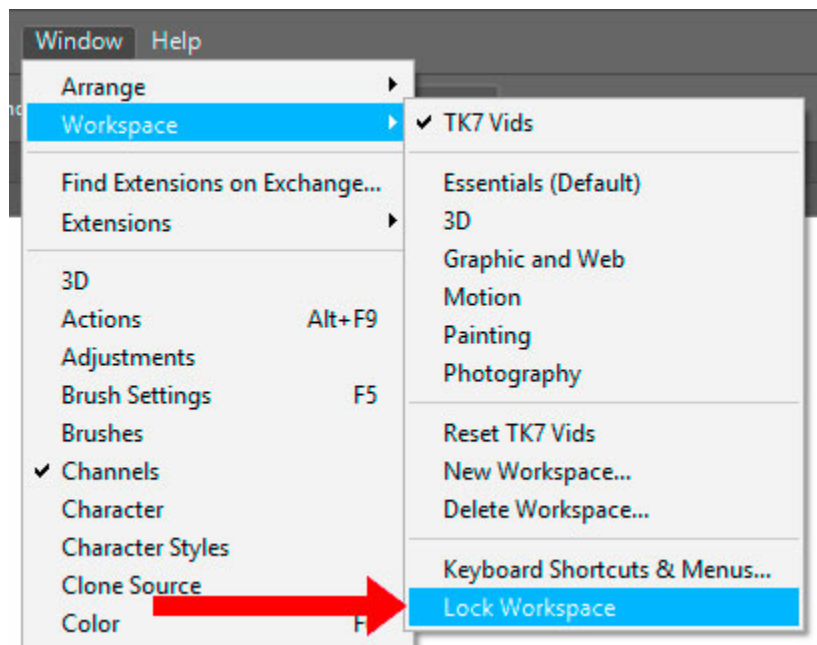
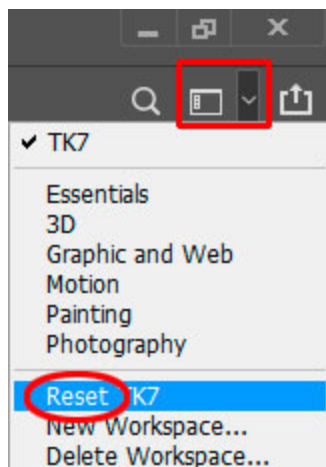


2. The modules have been installed but don't show up in Photoshop. There are a several possibilities to consider here.

a) Make sure to click through the menu command Window > Extensions to actually open the modules in Photoshop. Installation is not enough to actually have modules appear in Photoshop. The menu command needs to be used to open the modules. Once the modules are open, they will stay open and can be docked to a panel docking bar.

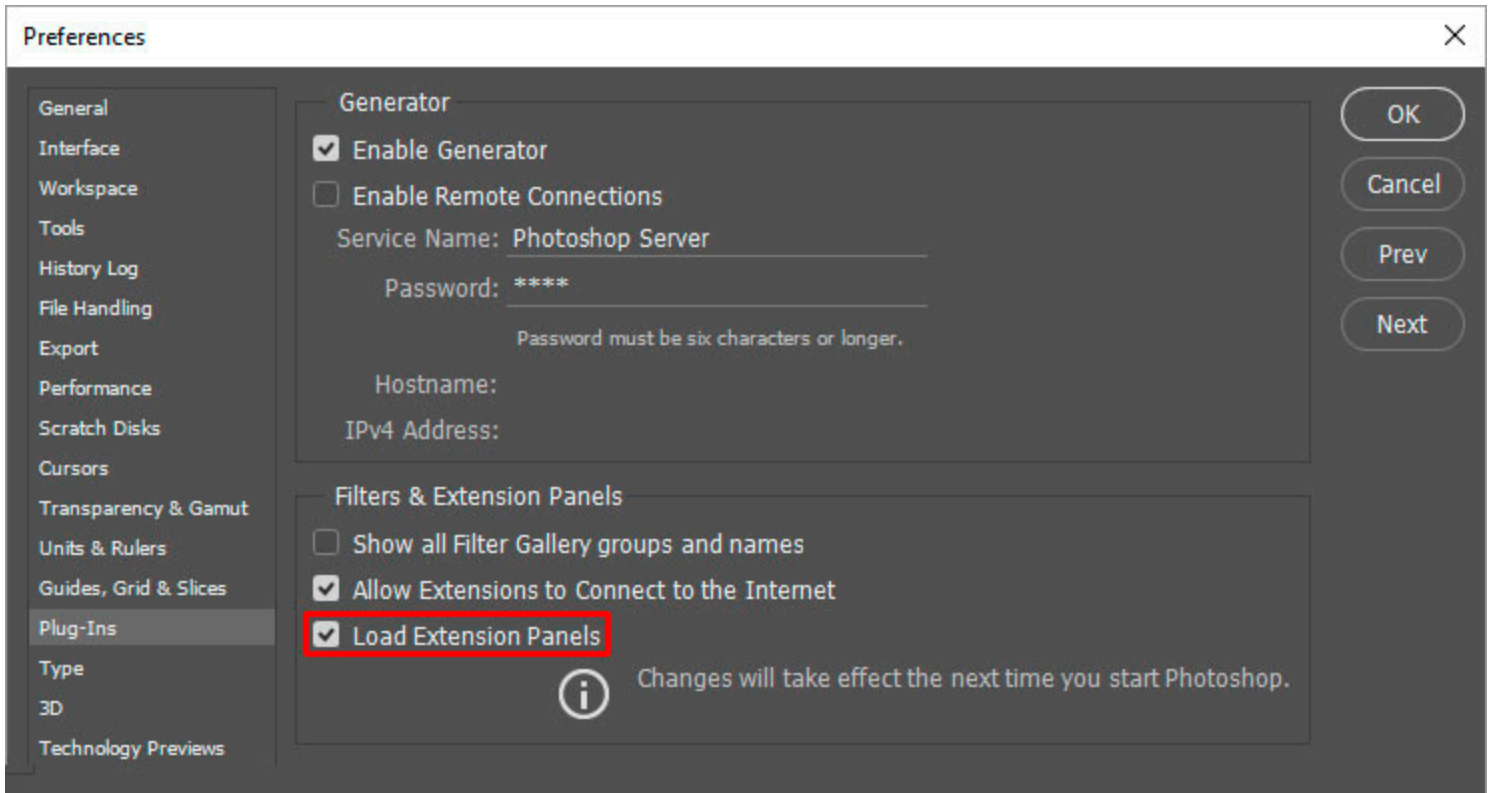
b) Try rebooting the computer.

c) Make sure the workspace isn't locked. Go to Window > Workspace on the Photoshop CC menu and see if there is a check mark beside the "Lock Workspace" menu item. If there is, click the menu item to remove the check mark. This will unlock the workspace and allow the modules for the panel open.



d) Reset the workspace. Open the workspace menu at the right of the Options bar and click the menu item near the bottom to "Reset" your current workspace. This has worked for several people.

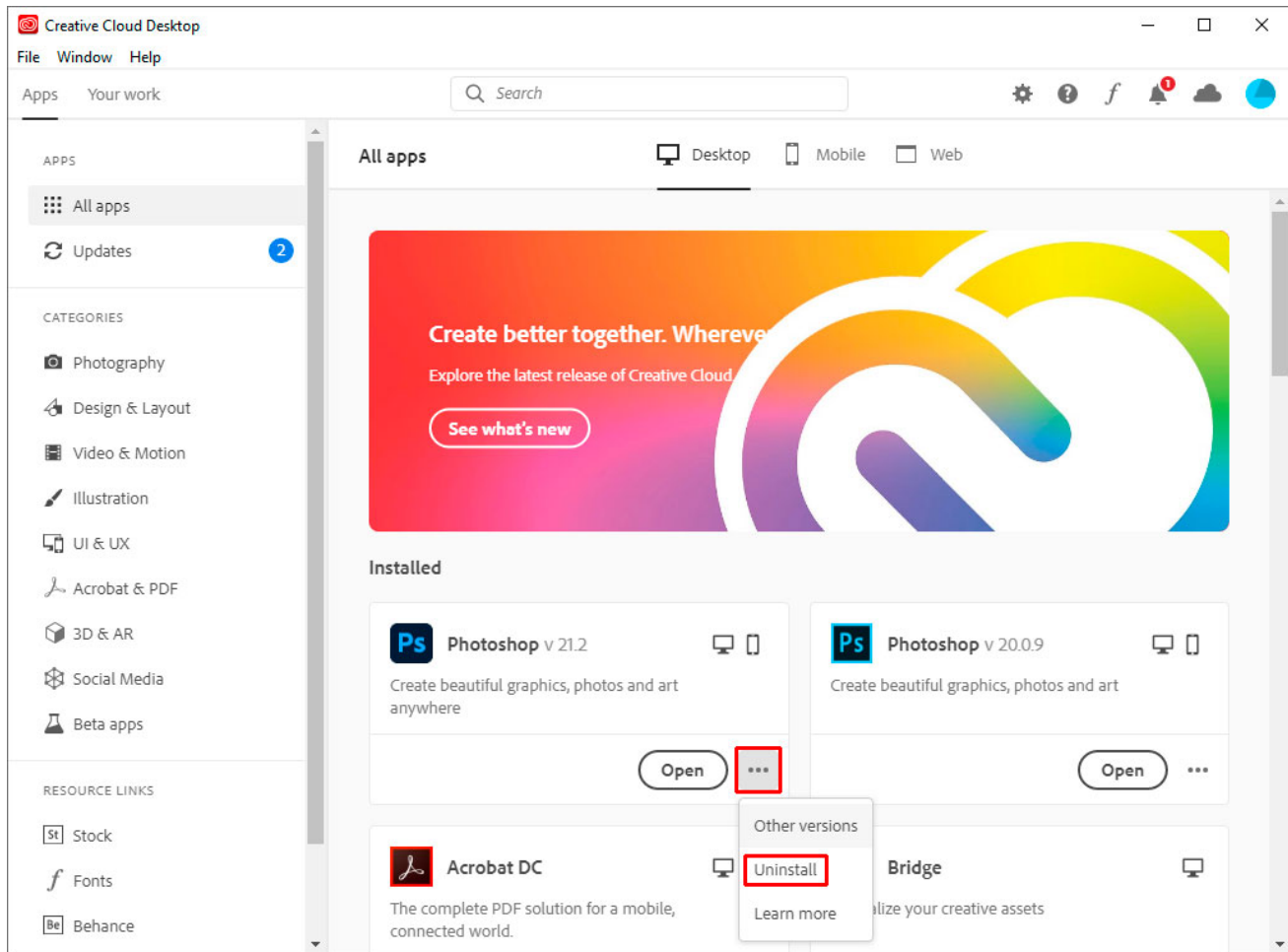
e) **There is a Photoshop preference setting that needs to be checked in order for extension panels to be loaded.** Make sure the checkbox "Load Extension Panels" under the "Plug-Ins" preferences is checked (red box, image below).



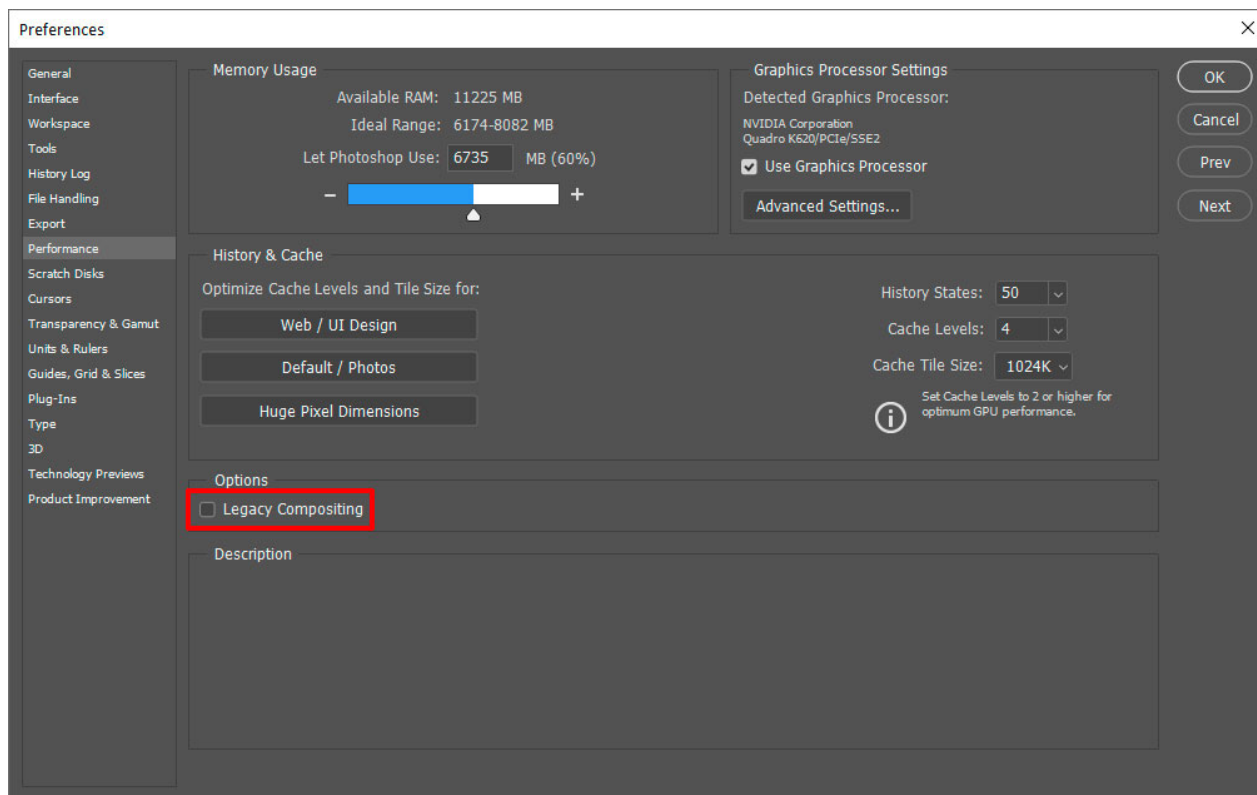
f) **If you are using the original version of Photoshop CC (version 14.x), the installer will not work.** Upgrade to the latest version of Photoshop CC in order to install and use the TK7 modules using the installer.

e) **Reinstalling Photoshop is sometimes necessary.** It's the only way to get Photoshop to recognize properly installed extension panels like the TK7 modules. Use the Creative Cloud desktop app to uninstall Photoshop. On the Apps tab, click the arrow to the right of "Open" and choose "Manage > Uninstall" to start the uninstall process.

Once Photoshop is uninstalled, reboot the computer and use the Creative Cloud desktop app to reinstall the application.



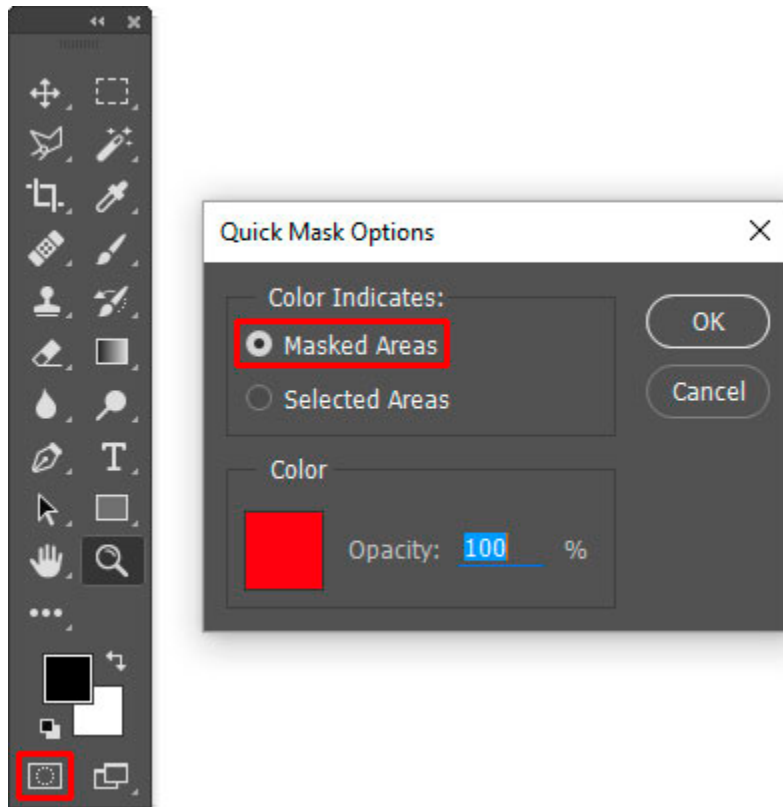
3. Make sure that "Legacy Compositing" in Preferences > Performance is unchecked. In the June 2020 release of Photoshop 2020, there is a new compositing engine. It's important that the old, legacy version NOT be active in order for the panel to properly make masks. If you are getting black masks, go to Preferences > Performance in the Photoshop menu and uncheck "Legacy Compositing" if it is checked to fix this problem.



4. Corrupted preferences files can also cause many different types of problems in Photoshop. When unexpected, unexplainable things start happening in Photoshop, it's a good idea to reset these preferences files. However, resetting these files may cause display options, file-saving options, cursor options, etc. to be reset to default values, so it's generally best to reserve this option until other things have been tried. Here's a webpage that tells how to reset the preferences files: <http://helpx.adobe.com/photoshop/using/preferences.html>

5. The masks generated by the module are inverted (the "Lights" masks are negatives and the "Dark" masks are positives).

This is NOT a problem caused by the module. If you create a selection using one of the Photoshop's other selection tools and then save the selection as a mask, it will also be inverted. So this is a Photoshop problem. There are two possible solutions.



a) Double-click the Edit in Quick Mask Mode button (rectangle with a circle inside) near the bottom of the Tools panel. From the window that opens, make sure the radio button for "Masked Areas" is selected. If the "Selected Areas" radio button is selected, masks will be inverted.

b) If the first solution doesn't work, it's possible that the Photoshop preferences files are corrupt and need to be reset. An online video to help do this can be found [here](#).

How to find "Macintosh HD" on Apple computers: Extension panels in Photoshop (like the TK7 panel) are installed in the SYSTEM Library. On Apple computers, there is a USER Library and a SYSTEM library. The SYSTEM Library is harder to find. It is important to start at "Macintosh HD" in order to find the SYSTEM library. If you do not see the "Macintosh HD" listed on your desktop or in the Finder sidebar (Apple hides it by default), here is how to make it visible.

1. Open Finder.
2. Click the "Finder" menu at the top and select "Preferences".
3. Click on the "Sidebar" tab.
4. Under "Devices" click the box to place a check mark next to "Hard disks" – this puts the "Macintosh HD" in the sidebar of the Finder window.

Once you see "Macintosh HD" on the Finder sidebar, you should be able to click it and see a "Library" folder. This is the SYSTEM library and the correct path to follow to the "extensions" folder where extension panels are installed.

Macintosh HD > Library > Application Support > Adobe > CEP > extensions

